

# G-4500 Series FAQ

Version 1.02

<b>Q01: What is the PIN code?</b> .....	2
<b>Q02: What are the GPRS and GPS module default baud rate?</b> .....	2
<b>Q03: How to use the G-4500 TPC Client to connect Remote TCP Server?</b> .....	2
<b>Q04: How to enable the gps chip on the g-4500?</b> .....	3
<b>Q05: How many sizes of buffer is the COM Port on the G-4500?</b> .....	3
<b>Q06: How to use domain name to connect Remote Server?</b> .....	3
<b>Q07: How to format the New SD card in the first time?</b> .....	4
<b>Q08: If the GSM function fails in some unforecast conditions, how to reset modem module?</b> .....	5

**Q01: What is the PIN code?**

**A01:** The PIN code of SIM card is a four to eight digit code that is used to prevent unauthorized use of a SIM card. Before you use the G-4500, please check the SIM card that isn't had PIN code.

**Q02: What are the GPRS and GPS module default baud rate?**

**A02:** GPRS chip default baud rate is 115200 bps.  
GPS chip default baud rate is 9600 bps.

**Q03: How to use the G-4500 TPC Client to connect Remote TCP Server?**

**A03:** Step1. Here is what you will need:

- GPRS user name - this is provided from your Telecom. CO., LTD.
- GPRS password - this is provided from your Telecom. CO., LTD.
- GPRS APN (Access point name) - this is provided from your Telecom. CO., LTD.
- Remote TCP Server IP
- Remote TCP Server Port

For example: AT&T Telecom. CO., LTD. in America

GPRS user name	WAP@CINGULARGPRS.COM
GPRS password	CINGULAR1
GPRS APN	wap.cingular

Step2.

```
#include "GPRS.h"
struct str_GPRS_setting rGPRS;

sprintf(rGPRS.user_name, " WAP@CINGULARGPRS.COM ");
sprintf(rGPRS.password, " CINGULAR1");
sprintf(rGPRS.ExtraStr, " wap.cingular ");
sprintf(rGPRS.GPRS_server,"1.2.3.4"); //Remote TCP Server IP
rGPRS.RemotePort = 10000; //Remote TCP Server Port

.....
while(1){
    .....
    GPRS_TCPClient(); // must be loop
}
```

© More information about how to connect to Remote TCP Server, please refer to demo and download from:

[ftp://ftp.icpdas.com/pub/cd/usbcd/napdos/g-4500/software/demo/gprs\\_sim300/tcp\\_client/](ftp://ftp.icpdas.com/pub/cd/usbcd/napdos/g-4500/software/demo/gprs_sim300/tcp_client/)

#### Q04: How to enable the gps chip on the g-4500?

##### A04:

```
X305IO_Init();
X305IO_Set_GPS(1);
/*
int X305IO_Set_GPS(int mode);
mode:
0 : Disable GPS chip
1 : Enable GPS chip
*/
```

#### Q05: How many sizes of buffer is the COM Port on the G-4500?

**A05:** It is default that 1024 bytes. If your GPRS datas are more than 1024 bytes, please refer to below method [before installcom funciton](#).

```
SetComPortBufferSize(modem_com, 2000, 5000); // The COM Port of G-4500 is 4.
InstallCom(modem_com, 115200L, 8, 0 ,1);
```

#### Q06: How to use domain name to connect Remote Server?

##### A06:

```
#include "GPRS.h"
struct str_GPRS_setting rGPRS;
rGPRS.DNSCFG = 0;
sprintf(rGPRS.DNS_Server, "168.95.1.1");
// The IP that 168.95.1.1 is Chunghwa Telecom Co., Ltd.'s DNS Server in Taiwan.

sprintf(rGPRS.GPRS_server,"www.abc.com"); //Remote TCP Server Domain name
rGPRS.RemotePort = 10000; //Remote TCP Server Port

.....
while(1){
.....
GPRS_TCPClient(); // must be loop
```

}

© More information about how to connect to Remote TCP Server, please refer to demo and download from:

[ftp://ftp.icpdas.com/pub/cd/usbcd/napdos/g-4500/software/demo/gprs\\_sim300/tcp\\_client/](ftp://ftp.icpdas.com/pub/cd/usbcd/napdos/g-4500/software/demo/gprs_sim300/tcp_client/)

### Q07: How to format the New SD card in the first time?

#### A07:

Step1. Please download the below website's firmware and upload the firmware to G-4500.

[ftp://ftp.icpdas.com/pub/cd/usbcd/napdos/g-4500/software/demo/mmc\\_fs4/demo2/](ftp://ftp.icpdas.com/pub/cd/usbcd/napdos/g-4500/software/demo/mmc_fs4/demo2/)

Step2. After upload the firmware to G-4500 and run, key in "format" in the 7188xw.exe

```

c:\ 7188XW 1.31 [COM1:115200,N,8,1],FC=0,CTS=1, DIR=C:\Program Files\ICPDAS\MiniOS7_Utility
7188x for WIN32 version 1.31 <2006/03/14>[By ICPDAS. Tim Tsai.]
[Begin Key Thread...][Current set: Use COM1 115200,N,8,1
AutoRun:
Autodownload files: None
Current work directory="C:\Program Files\ICPDAS\MiniOS7_Utility"
original baudrate = 115200!
now baudrate = 115200!

uP-4500>run #0 Step1.
2000/01/01<0> 00:00:00
[Disk Size=1456012000/01/01<0> 00:00:00

CD PATH or CD to display PWD
DELETE PATH
DELTREE PATH
DIR PATH
FORMAT <routine will prompt for arguments>
HELP
MKDIR PATH
RENAME filename NEWNAME
RMDIR PATH
TYPE filename
SETATTR D:PATH RDONLY|HIDDEN|SYSTEM|ARCHIVE|NORMAL
FILLFILE filename PATTERN NTIMES
LOAD
GET filename
QUIT

MicroSD:FORMAT Step2.
Pres: Y to format media Step3.
Calling media format
Press Y to format the volume Step4.
Format success.

MicroSD>

```

## Q08: If the GSM function fails in some unforecast conditions, how to reset modem module?

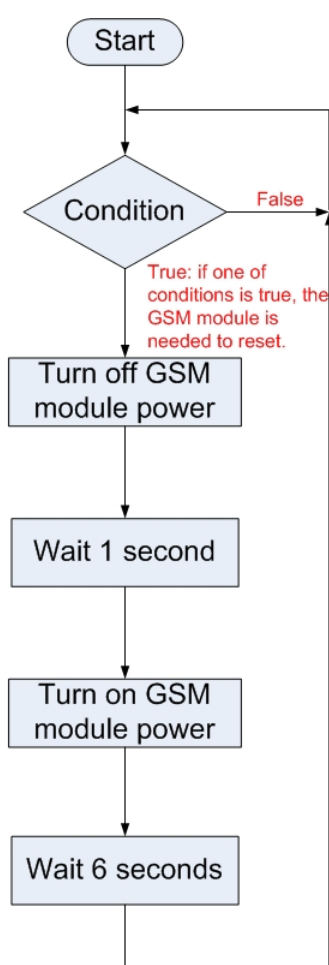
### A08:

Because the GSM function of G-4500 under some unforecast cases could fail, we suggest the users to reset modem module of G-4500 in these conditions below.

- 1) Users send an AT command to modem, but don't receive any response.
- 2) The modem can't register to base station. (AT command: **+CREG: 0,0**)
- 3) The led light of GSM/GPRS is always off.

The following steps describe how to reset the modem module in the G-4500 for users.

- Flow chart:



#### Condition:

- 1) Users send a AT command to modem, but don't receive any response.
- 2) The modem can't register to base station. (AT command: **+CREG: 0,0**)
- 3) The led light of GSM/GPRS is always off.

- How to reset the GSM modem?

```
void GPRS_ResetPWR(void)
{
    //Reset the GSM/GPRS module by controlling power
    GPRS_SetPower(0);
    Delay(1000);
    GPRS_SetPower(1);
}
```