

GT-540/GT-540P FAQ

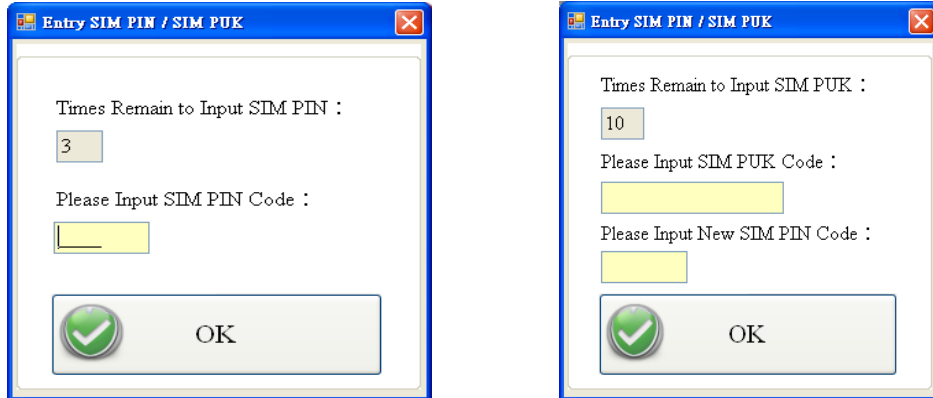
Tables of Content

Q01 : If user's SIM Card is needed PIN Code or PUK Code, how does the user do? ..	3
Q02 : How many modes does GT-540/GT-540P have?	3
Q03 : What is the difference between the GT-540 and GT-540P?.....	3
Q04 : What kind of information does user prepare about GPRS connection?.....	4
Q05 : How many maximum capacity of micro SD does the GT-540/GT-540P support?	5
.....	5
Q06 : In RTU mode, the GT-540/GT-540P can not connect to remote server. How does user do?.....	5
Q07 : If the STA of GT-540/GT-540P is always on, how does user do?	6
Q08 : If the counter function of GT-540/GT-540P is always error. How does user do?	7
.....	7
Q09 : Why dose the GT-540/GT-540P read Modbus device that always failed?.....	7
Q10 : In RTU mode, the remote server is a domain name, not the IP address. How does user do?	8
Q11 : In E-mail mode, the GT-540/GT-540P can not send e-mail. How does user do?	8

Q01 : If user's SIM Card is needed PIN Code or PUK Code, how does the user do?

A01 : When user uses the GT-540 Utility to login first time, the GT-540 utility will pop out a window that let user type PIN code or PUK code as below.

Note: STA LED director is flashing per 50 ms.

**Q02 : How many modes does GT-540/GT-540P have?**

A02 : The GT-540/GT-540P has 2 modes that RTU mode and E-mail mode.

- RTU mode: In this mode, GT-540 would transfer I/O data (local I/O, Modbus device and GPS data) to the M2M RTU center by GPRS connection periodically.
- E-Mail mode: Transfer I/O data by the e-mail attached file through GPRS connection periodically.

Q03 : What is the difference between the GT-540 and GT-540P?

A03 : The biggest difference is that the GT-540P has GPS function. If user wants data that have coordinate or UTC time, user can select GT-540P.

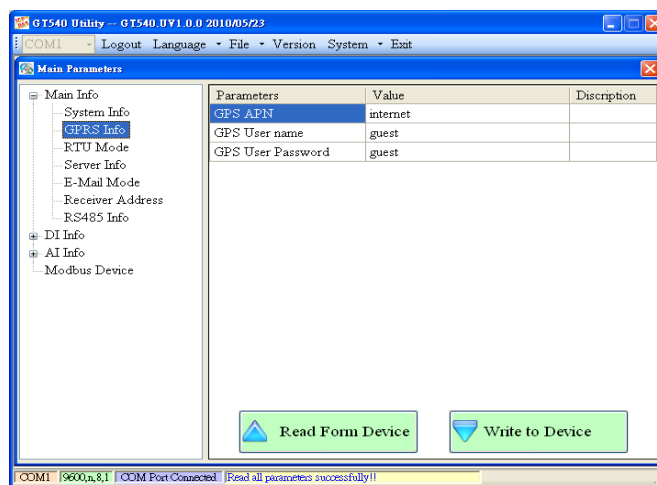
Q04 : What kind of information does user prepare about GPRS connection?

A04 : Here is what user needs :

- GPRS APN (Access point name) - this is provided from your Telecom. CO., LTD.
- GPRS user name – this is provided from your Telecom. CO., LTD.
- GPRS password – this is provided from your Telecom. CO., LTD.

For example : AT&T Telecom. CO., LTD. in America

GPRS APN	wap.cingular
GPRS user name	WAP@CINGULARGPRS.COM
GPRS password	CINGULAR1



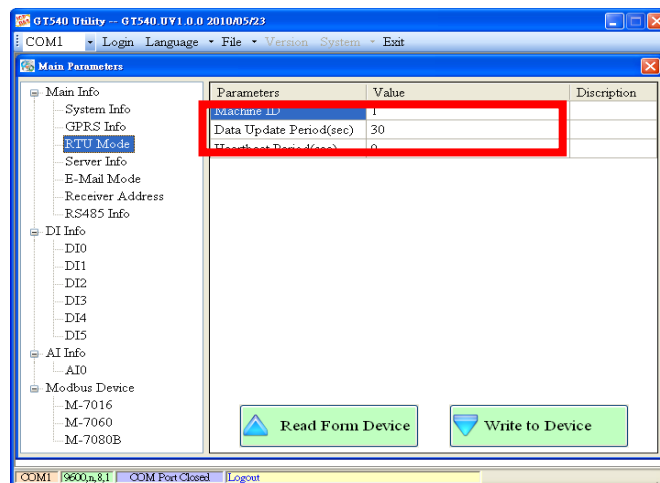
Q05 : How many maximum capacity of micro SD does the GT-540/GT-540P support?

A05 : The GT-540/GT-540P supports maximum capacity of micro SD as 2 GB.

(Data format: FAT16 or FAT32)

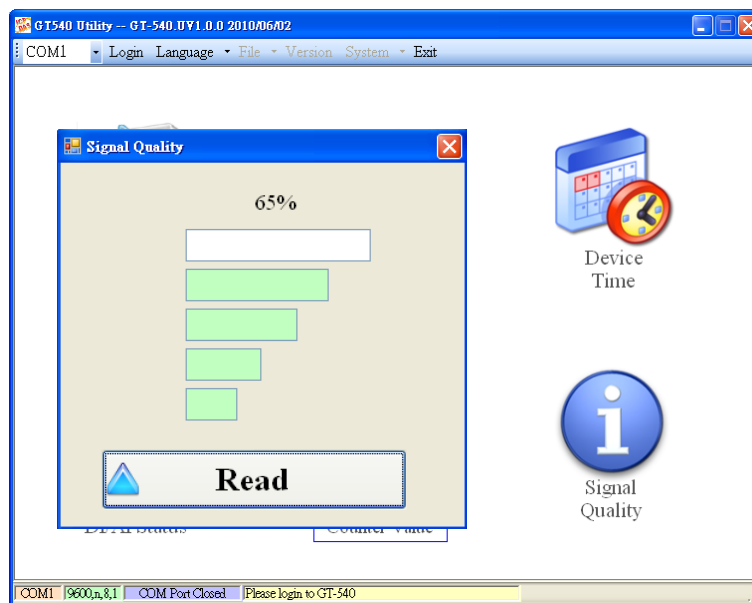
Q06 : In RTU mode, the GT-540/GT-540P can not connect to remote server. How does user do?

A06 : Please confirm the **Data Update Period** parameter. This parameter must be not the 0
When the **Data Update Period** parameter is 0, the GT-540/GT-540P will disable the RTU mode function.



Q07 : If the STA of GT-540/GT-540P is always on, how does user do?

A07 : Please check SIM card, GSM Antenna or the GSM signal strength again.

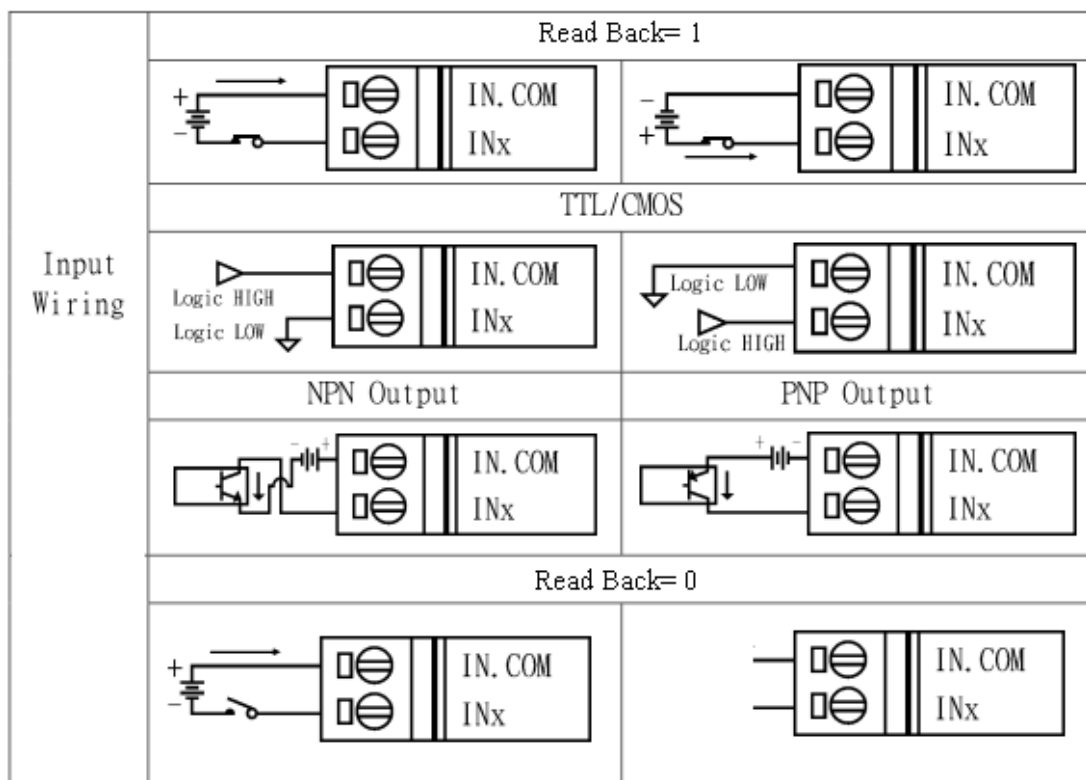


GT-540 Utility → Signal Quality

Q08 : If the counter function of GT-540/GT-540P is always error. How does user do?

A08 : Check the wiring of DI channel, the frequency of counter is 5~40 Hz or the DI setting in Utility is set as counter.

· DI Internal Structure:

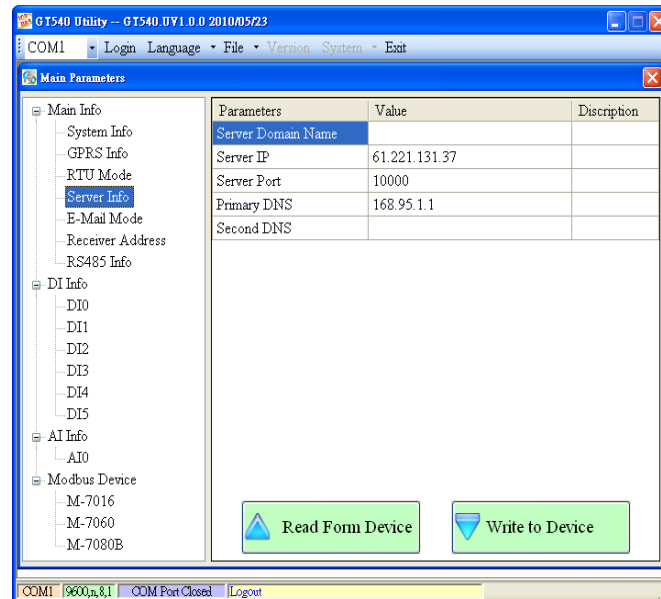


Q09 : Why dose the GT-540/GT-540P read Modbus device that always failed?

A09 : Please confirm the ID of Modbus device, start address of Modbus device and baud rate.

Q10 : In RTU mode, the remote server is a domain name, not the IP address. How does user do?

A10 : Please type Server Domain Name and Primary DNS information.



Q11 : In E-mail mode, the GT-540/GT-540P can not send e-mail. How does user do?

A11 : The GT-540/GT-540P supports two ways of authority to login e-mail server

- one: No authority
- auth-long: AUTH-LONG

Note: the GT-540/GT-540P does not support SSL authority.

