

GT-541 FAQ

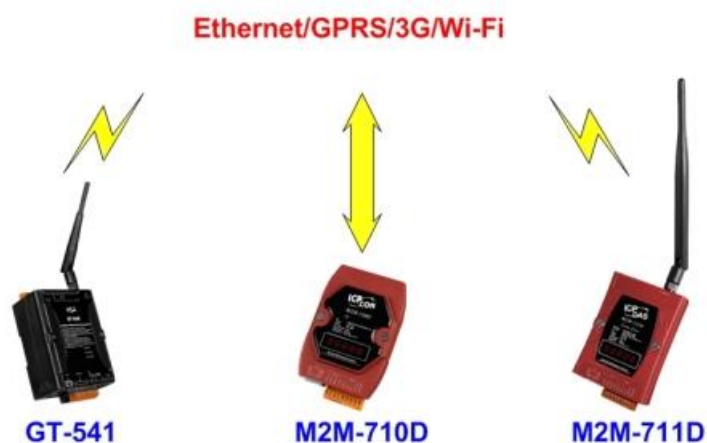
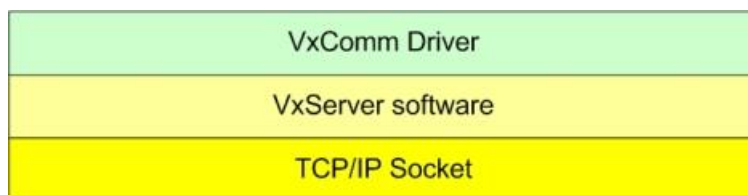
Tables of Content

Q01 : What is the software architecture about the GT-541?	3
Q02 : The STA led of the GT-541 is always on, what do I do?	3
Q03 : The STA led of GT-541 is blinking per 50 ms, what do I do?	4
Q04 : Why can not the GT-541 connect to VxServer?	5
Q05 : What is the maximum number of data for each packet can be transmitted?	5
Q06 : How to test the packets that have been transmitted successfully?	5
Q07 : What to do if the VxServer management windows show the message “VxComm Driver doesn't have any server.”?	6

Q01 : What is the software architecture about the GT-541?

A01 :

The customer must install the VxComm and VxServer software on their PC.



Item	Web site
VxServer	Virtual Com middleware software http://m2m.icpdas.com/VxServer.html
VxComm Driver	Virtual Communications Ports http://www.icpdas.com/products/Software/VxComm/vxcomm.htm

Note: The PC that installed the VxComm and VxServer must have a **public fixed IP**.

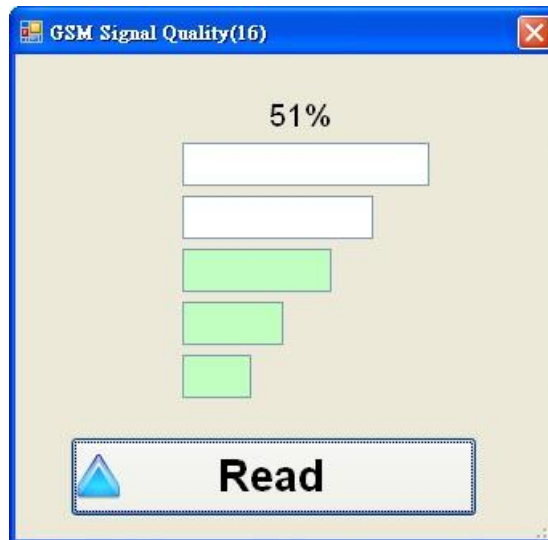
Q02 : The STA led of the GT-541 is always on, what do I do?

A02 :

- Check SIM Card installation
- Check antenna installation
- Use the GT-541 Utility to check the signal strength of GSM

Click "GT-541 Utility->System->Signal Quality" can show the signal quality windows to know the GSM signal strength.

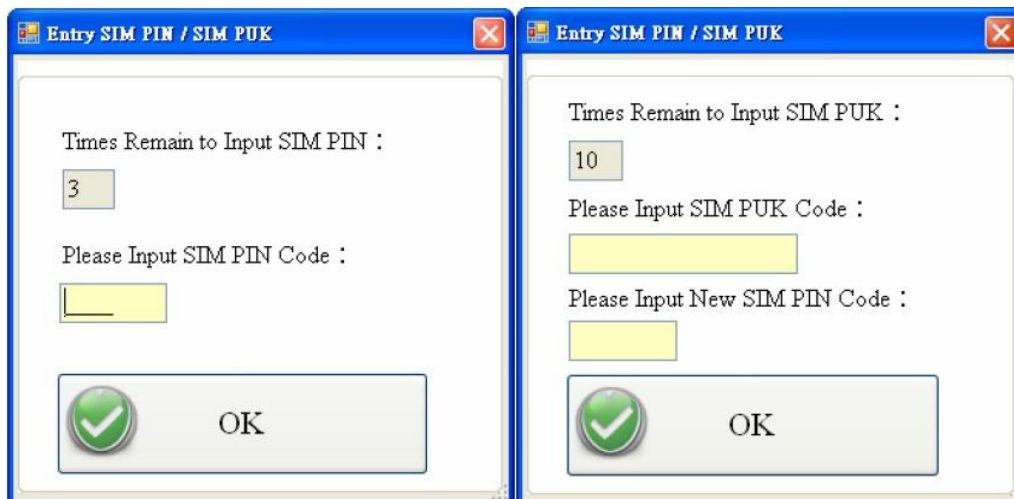




Q03 : The STA led of GT-541 is blinking per 50 ms, what do I do?

A03 : The PIN/PUK code is wrong. Use the GT-541 Utility to set the PIN/PUK code.

Click "GT-541 Utility->System->Input PIN/PUK" button to set the PIN/PUK code.



Q04 : Why can not the GT-541 connect to VxServer?

A04 : Please confirm the GPRS's parameter with your cellular carrier :

GT-541 Utility:

Project(none)			
System			
COM Port			
Parameters	Value	Description	
Protocol	VxComm mode	Read Only	
Address	1	Read Only	
Remote Server	0.0.0.0	Type remote ser...	
Remote Server Port	11000	Type remote ser...	
GPRS user name	GUEST	This parameter ...	
GPRS password	GUEST	This parameter ...	
GPRS APN	INTERNET	This parameter ...	
Virtual IP	127.0.11.22	This parameter ...	
Module Alias	ICP DAS	Module's alias, ...	
Heartbeat Time	10	Heartbeat Time ...	

- GPRS user name – this is provided from your Telecom. CO., LTD.
- GPRS password – this is provided from your Telecom. CO., LTD.
- GPRS APN (Access point name) - this is provided from your Telecom. CO., LTD.

For example : AT&T Telecom. CO., LTD. in America

GPRS user name	WAP@CINGULARGPRS.COM
GPRS password	CINGULAR1
GPRS APN	wap.cingular

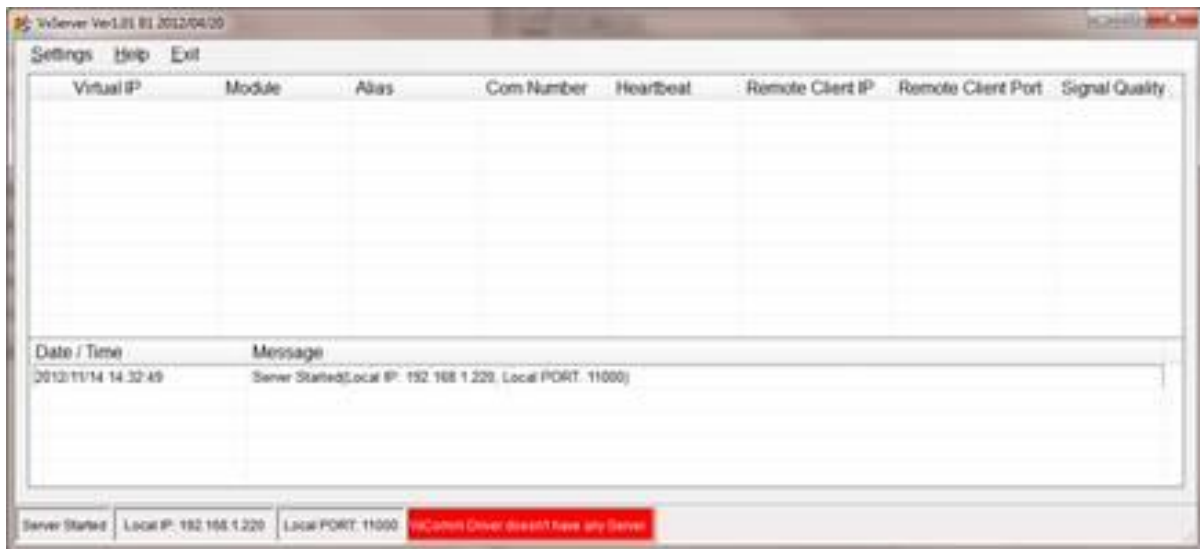
Q05 : What is the maximum number of data for each packet can be transmitted?

A05 : Maximum supported size is up to 1k bytes.

Q06 : How to test the packets that have been transmitted successfully?

A06 : To make a short circuit for Rx and Tx of RS232 to confirm if the received and sent data are correct.

Q07 : What to do if the VxServer management windows show the message “VxComm Driver doesn't have any server.”?



A07 : Please add a server to “VxComm Servers” by VxComm utility.