

GTM-201 Series FAQ

Tables of Content

Q01: What is the PIN code?	3
Q02: What are the GTM-201-RS232 and GTM-201-USB default baud rate?	3
Q03: What kind of information do you prepare before you use GPRS connection?....	3
Q04: How to set the GTM-201-RS232 when I want to use GPRS on the Operating System of Windows XP?	4
Q05: How to set the GTM-201-USB when I want to use GPRS on the Operating System of Windows XP?	5
Q06: How to use the AT command to check signal quality?	5
Q07: How to use the AT command to send a SMS (Short message service)?	6
Q08: When I found the power indicator of GTM-201 is lighth up but the GSM indicator of GTM-201 is off. How do I to do?	7
Q09: How to test SMS function of GTM-201 on XPac-8000?	8
Q10: How to test SMS function of GTM-201 on WinCE?	10

Q01: What is the PIN code?

A01: The PIN code of SIM card is a four to eight digit code that is used to prevent unauthorized use of a SIM card. Before you use the GTM-201 Series, please check the SIM card that isn't had PIN code.

Q02: What are the GTM-201-RS232 and GTM-201-USB default baud rate?

A02: GTM-201-RS232 and GTM-201-USB default baud rate are 115200 bps.

Q03: What kind of information do you prepare before you use GPRS connection?

A03: Here is what you will need :

- GPRS phone number– this is provided from your Telecom. CO., LTD.
- GPRS user name – this is provided from your Telecom. CO., LTD.
- GPRS password – this is provided from your Telecom. CO., LTD.
- GPRS APN (Access point name) - this is provided from your Telecom. CO., LTD.

For example: AT&T Telecom. CO., LTD. in America

GPRS phone number	*99***1#
GPRS user name	WAP@CINGULARGPRS.COM
GPRS password	CINGULAR1
GPRS APN	wap.cingular

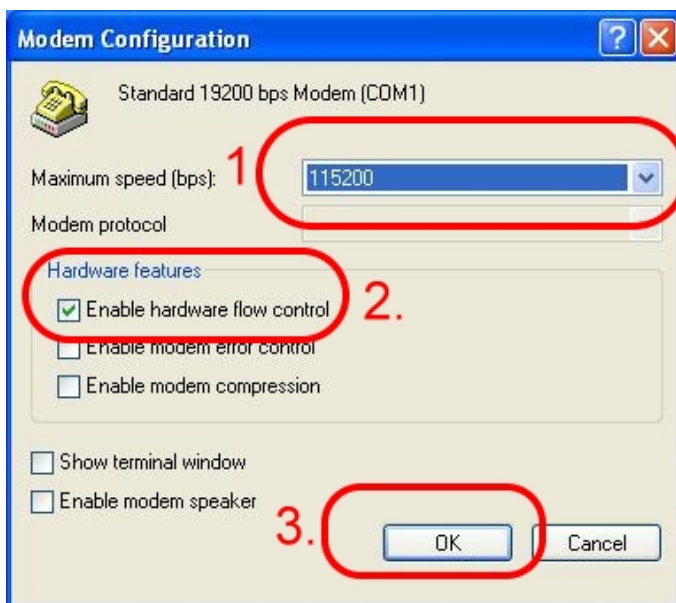
Q04: How to set the GTM-201-RS232 when I want to use GPRS on the Operating System of Windows XP?

A04:

Step1. Choose the SW1 to RTS/CTS mode on the GTM-201-RS232 Hardware.



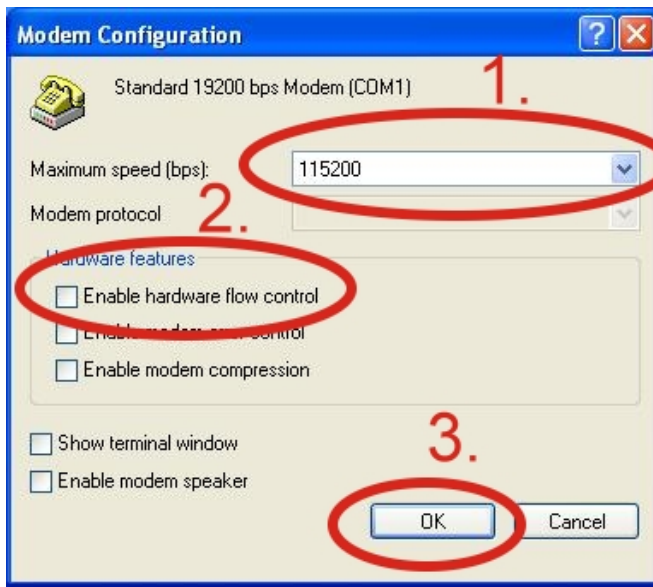
Step2. Control Panel → Network Connections → Click “Your GPRS’s name” → File → Properties → General → Select”Standard 19200 bps Modem” → Click “Configure” → Choose the “Enable hardware flow control”



Q05: How to set the GTM-201-USB when I want to use GPRS on the Operating System of Windows XP?

A05:

Control Panel → Network Connections → Click “Your GPRS’s name” → File → Properties → General → Select”Standard 19200 bps Modem” → Click “Configure” → Don’t Choose the “Enable hardware flow control”



Q06: How to use the AT command to check signal quality?

A06:

Syntax:

Command	Responses
AT+CSQ<CR>	+CSQ: <rss>,<ber>

Parameters:

<rss>: received signal strength	
Parameter	Description
0	-113 dBm or less
1	-111 dBm
2 to 30	-109 to -53 dBm
31	-51 dBm or greater
99	not known or not detectable
<ber>: channel bit error rate	

Parameter	Description
0 to 7	as RXQUAL values in the table in GSM 05.08 [20] subclause 8.2.4
99	not known or not detectable

Note: For more information about AT command, please visit the following website: [at command set.pdf](#)

Q07: How to use the AT command to send a SMS (Short message service)?

A07:

Syntax

In text mode:

Command	Responses
AT+CMGS=<da>[,<todo>]<CR> text is entered <ctrl-Z>	+CMGS: <mr> OK

In PDU mode:

Command	Responses
AT+CMGS=<length><CR> PDU is given <ctrl-Z>	+CMGS: <mr> OK

Parameters:

Parameter	Description
<da>	Destination address (string type)
<todo>	Type of address of da
<length>	length of the TP data unit in bytes (integer type)
<mr>	message reference (integer type)

Examples

In text mode:

Command	Responses
AT+CMGF=1<CR> <i>Note: Select Text mode</i>	OK
AT+CMGS="3325790123"<CR>	>
Hello world!! <ctrl-Z> <i>Note: Send a message in text mode</i>	+CMGS: <100> OK <i>Note: Successful transmission</i>

In PDU mode:

Command	Responses
---------	-----------

AT+CMGF=0<CR> <i>Note: Select PDU mode</i>	OK
AT+CMGS=<length><CR>	>
<pdu>	
<ctrl-Z> <i>Note: Send a message in text mode</i>	+CMGS: <101> OK <i>Note: Successful transmission</i>

Note: For more information about AT command, please visit the following website: [at command set.pdf](#)

Q08: When I found the power indicator of GTM-201 is lighth up but the GSM indicator of GTM-201 is off. How do I to do?

A08:

Please check your power supply whether provide enough power for GTM-201 or not.

GTM-201 Series	Idle: 25 mA @ 24 V _{DC}
Power Consumption	Data Link: 100 ~ 400 mA (peak) @ 24 V _{DC}

Q9: How to test SMS function of GTM-201 on XPac-8000?

A09:

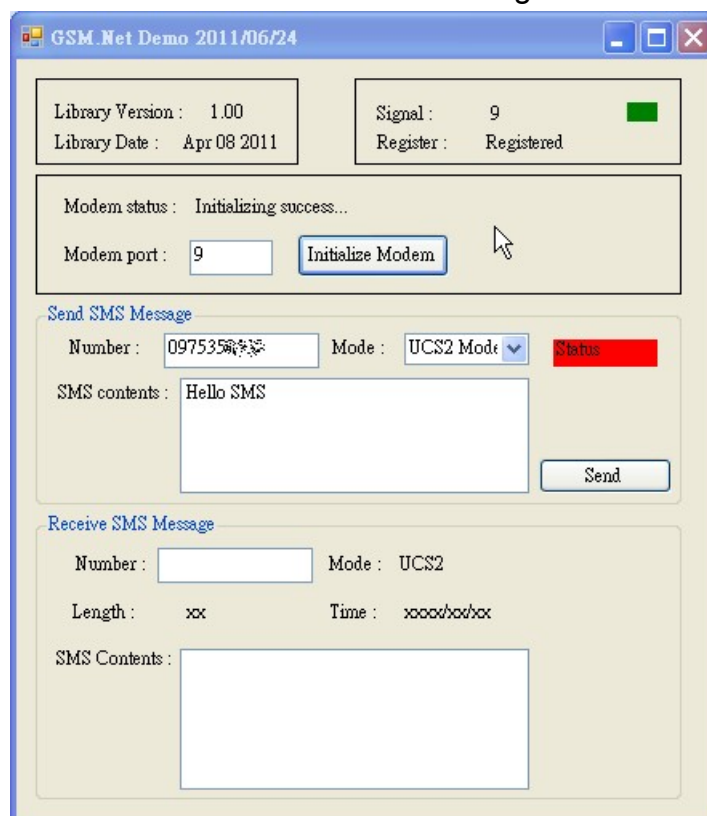
(1) Please download the program for testing from link: (all files in this folder)

http://ftp.icpdas.com/pub/cd/usbcd/napdos/3g_modem/gtm-201-3gwa/software/demo/gsmnetdemo/bin/release/

(2) First, please execute "gsmnetdemo.exe".

Please input the COM port number of the modem, and then click the button "Initialize Modem".

You will look the screenshot as below after waiting a moment:



(3) Please type the data:

Number : the phone number that you want to send

Mode : "UCS2" means Uni-code, "7-bits" just accepts English and Numbers

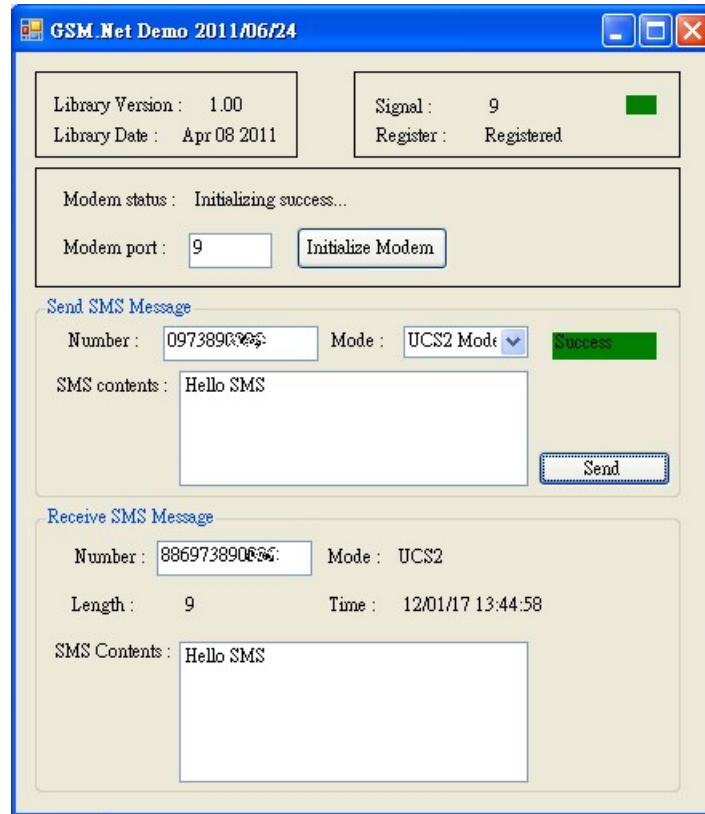
SMS contents : the string that you want to send

And click "Send", the program will start to send SMS.

(4) If you send success, the screenshot will like below.

(in this case, the phone number for Sending = the phone number for Receiving)

If fail, please check that your SIM Card is ready for Sending SMS.



Q10: How to test SMS function of GTM-201 on WinCE?

A10:

(1) Please download the program for testing from link: (all files in this folder)

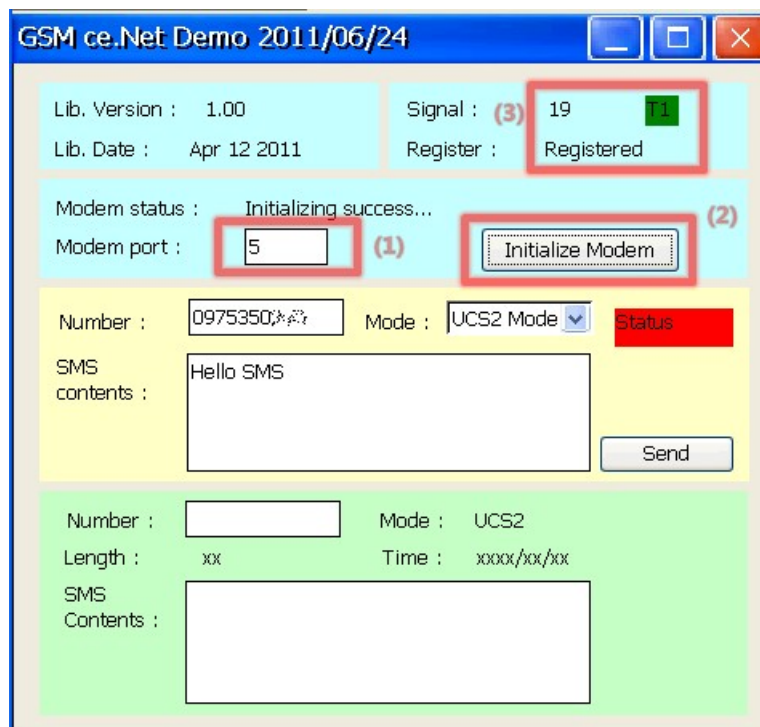
http://ftp.icpdas.com/pub/cd/usbcd/napdos/3g_modem/gtm-201-3gwa/software/demo/gsmcenetdemo/bin/release/

(2) First, please execute "gsmnetdemo.exe".

Please input the COM port number of the modem, and then click the button "Initialize Modem".

You will look the screenshot as below after waiting a moment:

- Please type your COM number of WinCE (modem COM port)



(3) Please type the data:

Number: the phone number that you want to send

Mode: "UCS2" means Uni-code, "7-bits" just accept English and Number

SMS contents: the string that you want to send

And click "Send", the program will start to send SMS.

(4) If you send success, the screenshot will like below.

(In this case, the phone number for Sending = the phone number for Receiving)

If fail, please check that your SIM Card is ready for Sending SMS.

