

GTM-201 Series FAQ

Tables of Content

Q01: What is the PIN code?	3
Q02: What are the GTM-201-RS232 and GTM-201-USB default baud rate?	3
Q03: What kind of information do you prepare before you use GPRS connection? ...	3
Q04: How to set the GTM-201-RS232 when I want to use GPRS on the Operating System of Windows XP?	4
Q05: How to set the GTM-201-USB when I want to use GPRS on the Operating System of Windows XP?	5
Q06: How to use the AT command to check signal quality?	5
Q07: How to use the AT command to send a SMS (Short message service)?	6
Q08: When I found the power indicator of GTM-201 is lighth up but the GSM indicator of GTM-201 is off. How do I to do?	7
Q09: How to test SMS function of GTM-201 on XPac-8000?	8
Q10: How to test SMS function of GTM-201 on WinCE?	10
Q11: How to use CSD mode to transmit data?	11
Q12: Why can't GTM-201 register to the network when the SIM card, the antenna and signal are all ready?	12
Q13: Does GTM-201 have a built-in WDT?	12
Q14: I use smstools to send SMS by GTM-201-RS232 on Linux environment, but it shows "Modem is not clear to send" message. How can I fix this problem?	12
Q15: I can't find Linux driver on the website and CD. How to communicate with GTM-201-RS232?	12

Q01: What is the PIN code?

A01: The PIN code of SIM card is a four to eight digit code that is used to prevent unauthorized use of a SIM card. Before you use the GTM-201 Series, please check the SIM card that isn't had PIN code.

Q02: What are the GTM-201-RS232 and GTM-201-USB default baud rate?

A02: GTM-201-RS232 and GTM-201-USB default baud rate are 115200 bps.

Q03: What kind of information do you prepare before you use GPRS connection?

A03: Here is what you will need :

- GPRS phone number– this is provided from your Telecom. CO., LTD.
- GPRS user name – this is provided from your Telecom. CO., LTD.
- GPRS password – this is provided from your Telecom. CO., LTD.
- GPRS APN (Access point name) - this is provided from your Telecom. CO., LTD.

For example: AT&T Telecom. CO., LTD. in America

GPRS phone number	*99***1#
GPRS user name	WAP@CINGULARGPRS.COM
GPRS password	CINGULAR1
GPRS APN	wap.cingular

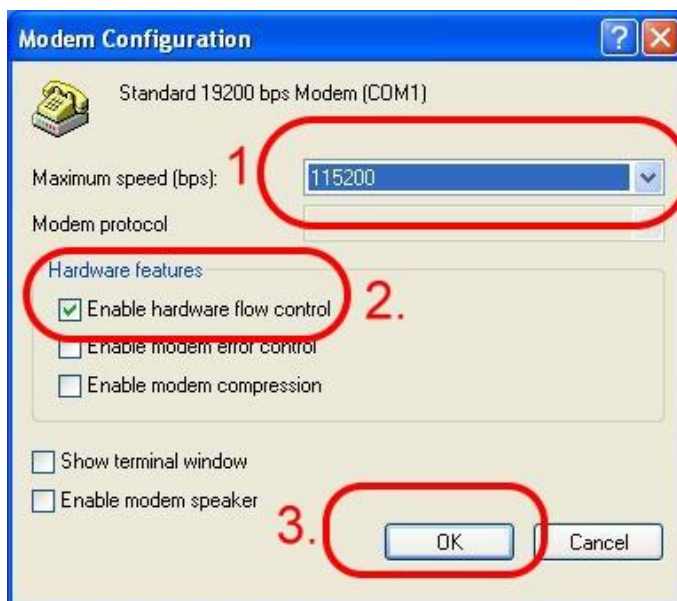
Q04: How to set the GTM-201-RS232 when I want to use GPRS on the Operating System of Windows XP?

A04:

Step1. Choose the SW1 to RTS/CTS mode on the GTM-201-RS232 Hardware.



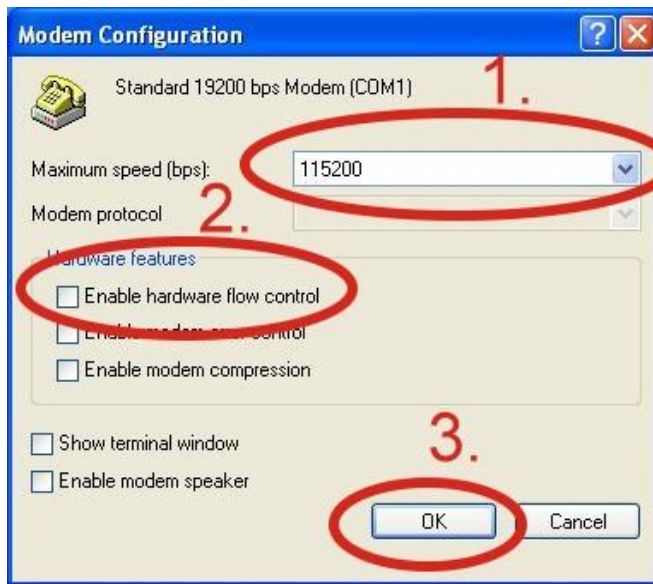
Step2. Control Panel → Network Connections → Click “Your GPRS’s name” → File → Properties → General → Select”Standard 19200 bps Modem” → Click “Configure” → Choose the “Enable hardware flow control”



Q05: How to set the GTM-201-USB when I want to use GPRS on the Operating System of Windows XP?

A05:

Control Panel → Network Connections → Click “Your GPRS’s name” → File → Properties → General → Select “Standard 19200 bps Modem” → Click “Configure” → Don’t Choose the “Enable hardware flow control”



Q06: How to use the AT command to check signal quality?

A06:

Syntax:

Command	Responses
AT+CSQ<CR>	+CSQ: <rss>,<ber>

Parameters:

<rss>: received signal strength	
Parameter	Description
0	-113 dBm or less
1	-111 dBm
2 to 30	-109 to -53 dBm
31	-51 dBm or greater
99	not known or not detectable
<ber>: channel bit error rate	

Parameter	Description
0 to 7	as RXQUAL values in the table in GSM 05.08 [20] subclause 8.2.4
99	not known or not detectable

Note: For more information about AT command, please visit the following website: [at command set.pdf](#)

Q07: How to use the AT command to send a SMS (Short message service)?

A07:

Syntax

In text mode:

Command	Responses
AT+CMGS=<da>[,<toda>]<CR> text is entered <ctrl-Z>	+CMGS: <mr> OK

In PDU mode:

Command	Responses
AT+CMGS=<length><CR> PDU is given <ctrl-Z>	+CMGS: <mr> OK

Parameters:

Parameter	Description
<da>	Destination address (string type)
<toda>	Type of address of da
<length>	length of the TP data unit in bytes (integer type)
<mr>	message reference (integer type)

Examples

In text mode:

Command	Responses
AT+CMGF=1<CR> <i>Note: Select Text mode</i>	OK
AT+CMGS="3325790123"<CR>	>
Hello world!! <ctrl-Z> <i>Note: Send a message in text mode</i>	+CMGS: <100> OK <i>Note: Successful transmission</i>

In PDU mode:

Command	Responses
---------	-----------

AT+CMGF=0<CR> <i>Note: Select PDU mode</i>	OK
AT+CMGS=<length><CR>	>
<pdu>	
<ctrl-Z> <i>Note: Send a message in text mode</i>	+CMGS: <101> OK <i>Note: Successful transmission</i>

Note: For more information about AT command, please visit the following website: [at command set.pdf](#)

Q08: When I found the power indicator of GTM-201 is light up but the GSM indicator of GTM-201 is off. How do I to do?

A08:

Please check your power supply whether provide enough power for GTM-201 or not.

GTM-201 Series	Idle: 25 mA @ 24 V _{DC}
Power Consumption	Data Link: 100 ~ 400 mA (peak) @ 24 V _{DC}

Q9: How to test SMS function of GTM-201 on XPac-8000?

A09:

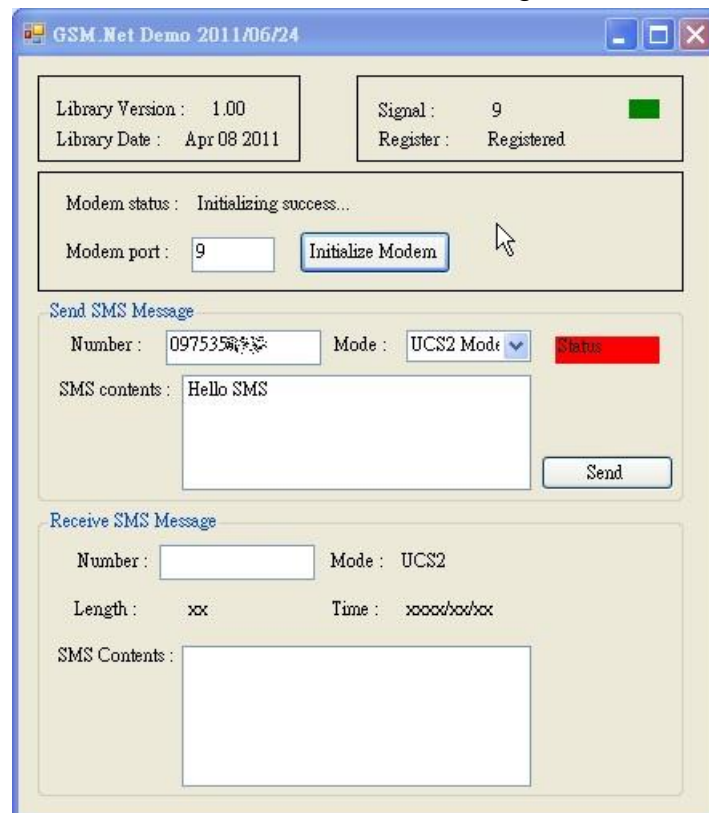
(1) Please download the program for testing from link: (all file in this folder)

http://ftp.icpdas.com/pub/cd/usbcd/napdos/3g_modem/gtm-201-3gwa/software/demo/gsmnetdemo/bin/release/

(2) First, please execute "gsmnetdemo.exe".

Please input the com port number of the modem, and then click button "Initialize Modem".

You will look the screenshot as below after waiting a moment:



(3) Please type the data:

Number : the phone number that you want to send

Mode : "UCS2" mean Uni-code, "7-bits" just accept English and Number

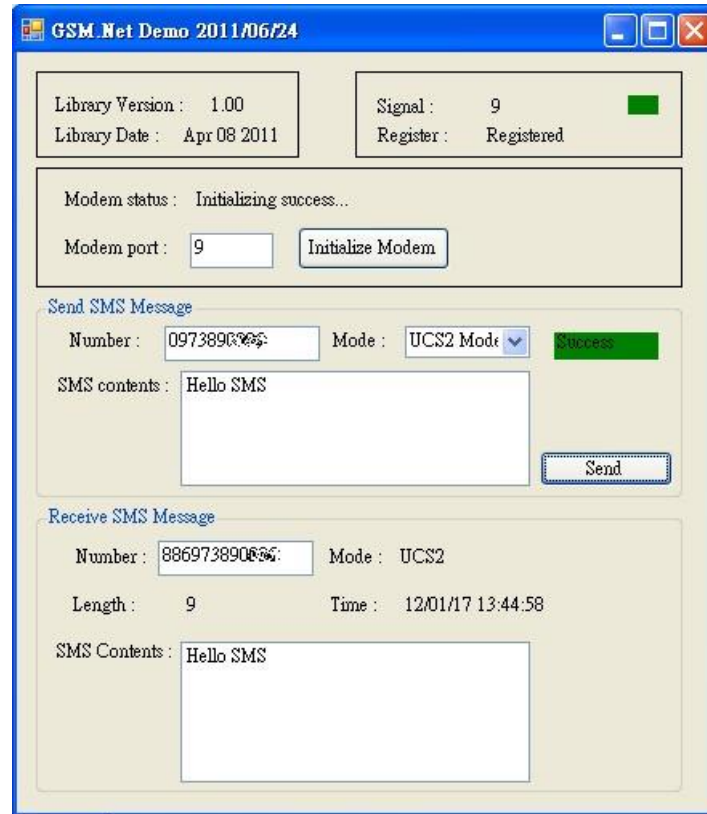
SMS contents : the string that you want to send

And click "Send", the program will start to send SMS.

(4) If you send success, the screenshot will like below.

(in this case, the phone number for Sending = the phone number for Receiving)

If fail, please check that your SIM Card is ready for Sending SMS.



Q10: How to test SMS function of GTM-201 on WinCE?

A10:

(1) Please download the program for testing from link: (all files in this folder)

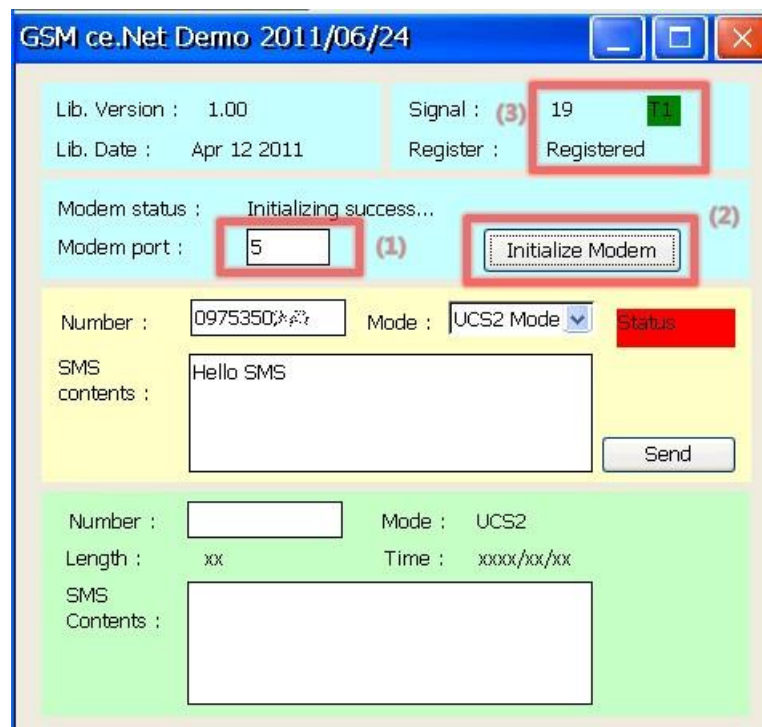
http://ftp.icpdas.com/pub/cd/usbcd/napdos/3g_modem/gtm-201-3gwa/software/demo/gsmcnetdemo/bin/release/

(2) First, please execute "gsmnetdemo.exe".

Please input the COM port number of the modem, and then click button "Initialize Modem".

You will look the screenshot as below after waiting a moment:

- Please type your COM number of WinCE (modem COM port)



(3) Please type the data:

Number: the phone number that you want to send

Mode: "UCS2" means Uni-code, "7-bits" just accept English and Number

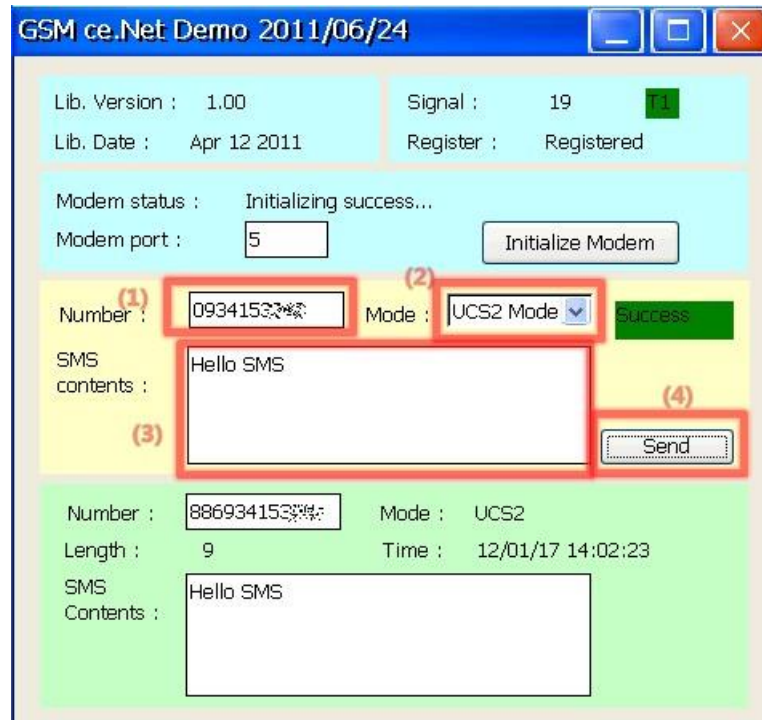
SMS contents: the string that you want to send

And click "Send", the program will start to send SMS.

(4) If you send success, the screenshot will like below.

(In this case, the phone number for Sending = the phone number for Receiving)

If fail, please check that your SIM Card is ready for Sending SMS.



Q11: How to use CSD mode to transmit data?

A11:

- (1) You need to apply for CSD mode service from your telecom operator.
- (2) Set the GTM-201 in CSD mode
- (3) When dialing , do not add ";" to the end
- (4) When receiver answers the phone, it is right the CSD mode.

step	Caller	Receiver	explanation
1	AT+CSNS = 4 AT+VPSM = 1		Change to CSD(data) mode. If SIM900 use AT+CSNS=4. If SIM5218 use AT+VPSN=1.
2	ATD0911xxxx xx		Do not add ";" to the end
3		ATA	Answer the phone(show connect 9600 after connection)
4	ABCD....		Send data to caller
5		1234...	Send data to Receiver
6	+++		Switch from CSD mode to Command mode
7	AT+CSQ		Signal quality
8	ATO		Switch from command mode to CSD mode

9	ABCD...		Send data to Receiver
10	+++		Switch from CSD mode to Command mode
11	ATH		Hung up

Q12: Why can't GTM-201 register to the network when the SIM card, the antenna and signal are all ready?

A12: Please check that the SIM card needs PIN code or not, if it does, cancel the PIN code.

Q13: Does GTM-201 have a built-in WDT?

A13:

No, but you can use the command to restart GTM201, please refer to steps as below.

Step1. Please open Hyper Terminal, and open the COM Port of the GTM-201

Step2. type the command "@ICPDASRESET", and then don't send any data to GTM-201 in 100ms. The modem will be reset.

Q14: I use smstools to send SMS by GTM-201-RS232 on Linux environment, but it shows "Modem is not clear to send" message. How can I fix this problem?

A14: Please choose the SW1 to RTS/CTS mode on the GTM-201-RS232 Hardware.



Q15: I can't find Linux driver on the website and CD. How to communicate with GTM-201-RS232?

A15: GTM-201-RS232 doesn't need driver on Linux platform. Please access the device node /dev/ttyS0.