

# **I-8212W/I-8213W FAQ**

# Tables of Content

**Q01: How to test SMS function of I-8212W/I-8213W on XPac-8000? ..... 3**  
**Q02: How to test SMS function of I-8212W/I-8213W on ViewPac or WinPac (WinCE)?  
..... 5**

**Q01: How to test SMS function of I-8212W/I-8213W on XPac-8000?**

A01:

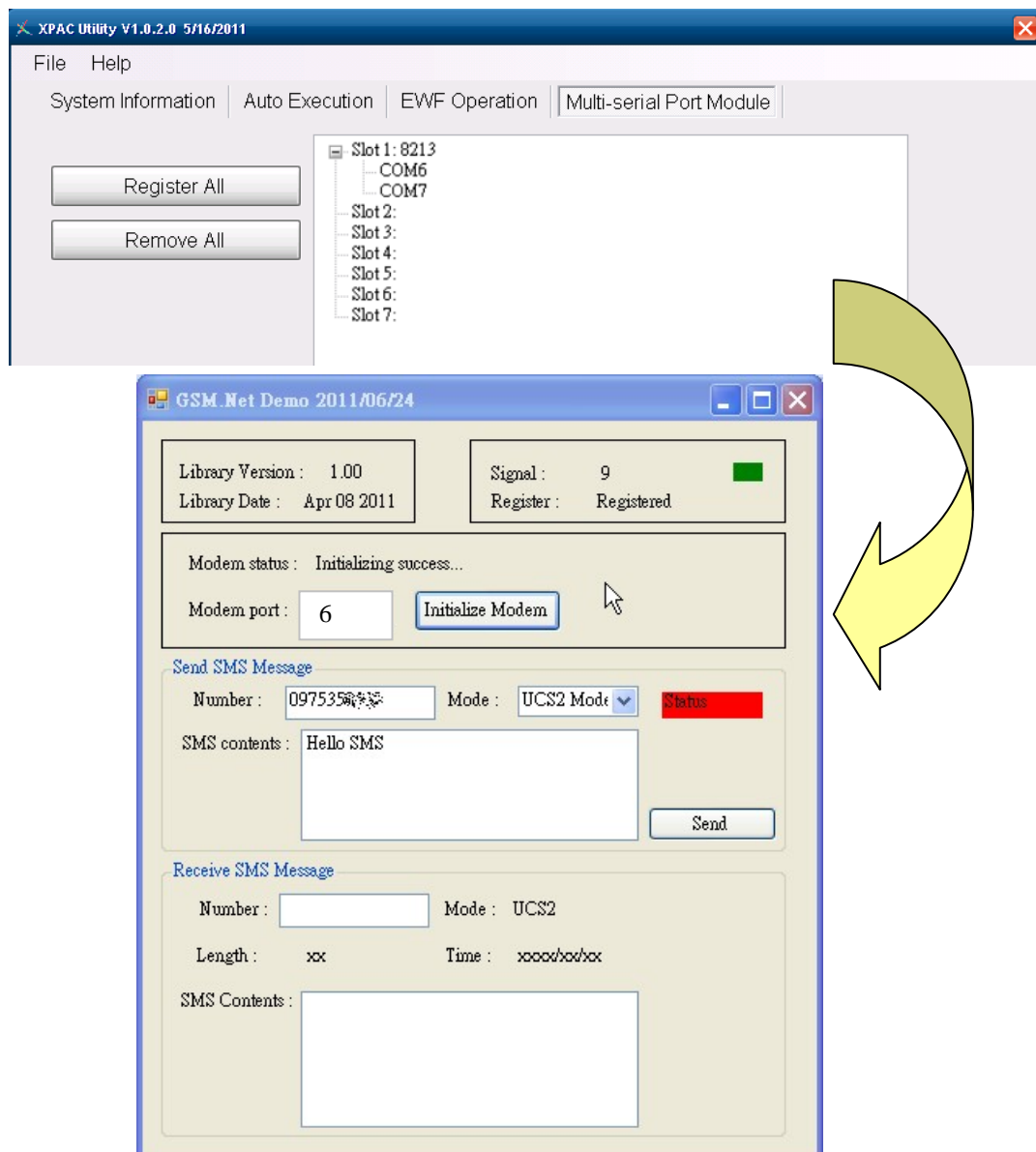
(1) Please download the program for testing from link: (all files in this folder)

[http://ftp.icpdas.com/pub/cd/usbcd/napdos/3g\\_modem/gtm-201-3gwa/software/demogsmnetdemo/bin/release/](http://ftp.icpdas.com/pub/cd/usbcd/napdos/3g_modem/gtm-201-3gwa/software/demogsmnetdemo/bin/release/)

(2) First, please execute "gsmnetdemo.exe".

Please input the COM port number of the modem, and then click the button "Initialize Modem".

You will look the screenshot as below after waiting a moment:



(3) Please type the data:

Number : the phone number that you want to send

Mode : "UCS2" mean Uni-code, "7-bits" just accept English and Number

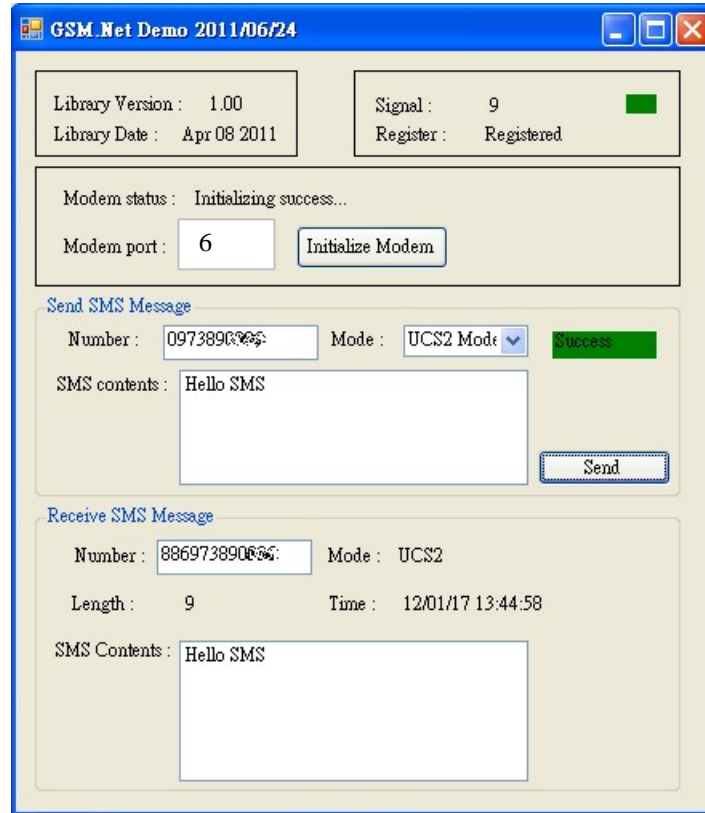
SMS contents : the string that you want to send

And click "Send", the program will start to send SMS.

(4) If you send success, the screenshot will like below.

(in this case, the phone number for Sending = the phone number for Receiving)

If fail, please check that your SIM Card is ready for Sending SMS.



**Q02: How to test SMS function of I-8212W/I-8213W on ViewPac or WinPac (WinCE)?**

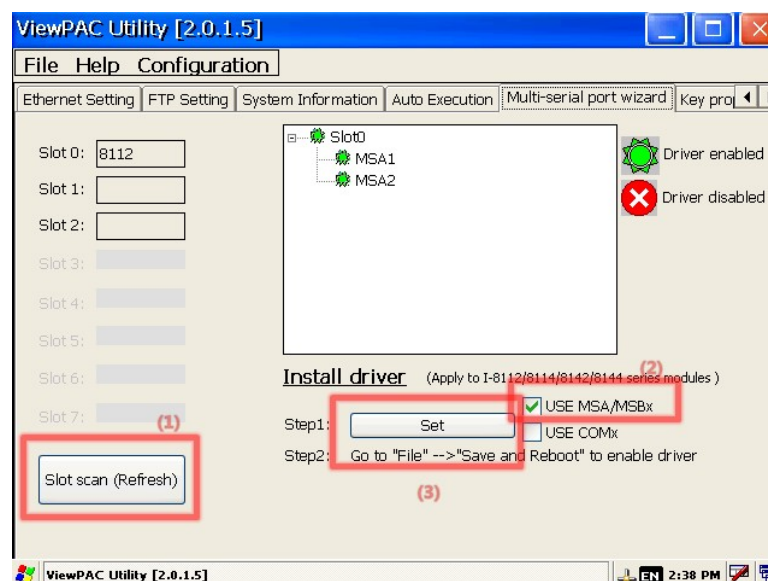
A02:

(1) Please download the program for testing from link: (all files in this folder)

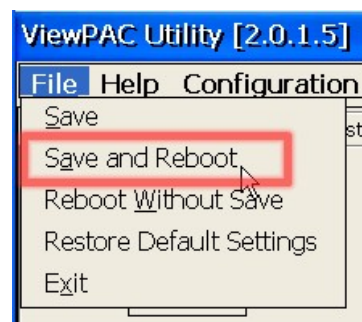
[http://ftp.icpdas.com/pub/cd/usbcd/napdos/3g\\_modem/gtm-201-3gwa/software/demo/gsmcnetdemo/bin/release/](http://ftp.icpdas.com/pub/cd/usbcd/napdos/3g_modem/gtm-201-3gwa/software/demo/gsmcnetdemo/bin/release/)

(2) Before testing SMS, you must set your COM port in CE.

- Please insert I-8212W in slot 1
- Please execute ViewPAC Utility (or WinPAC Utility) to set COM port.
- click "scan slot" button.
- click "USE MSA/MSBx"
- click "set" button.
- you will see as screenshot as below.



(3) save and reboot.

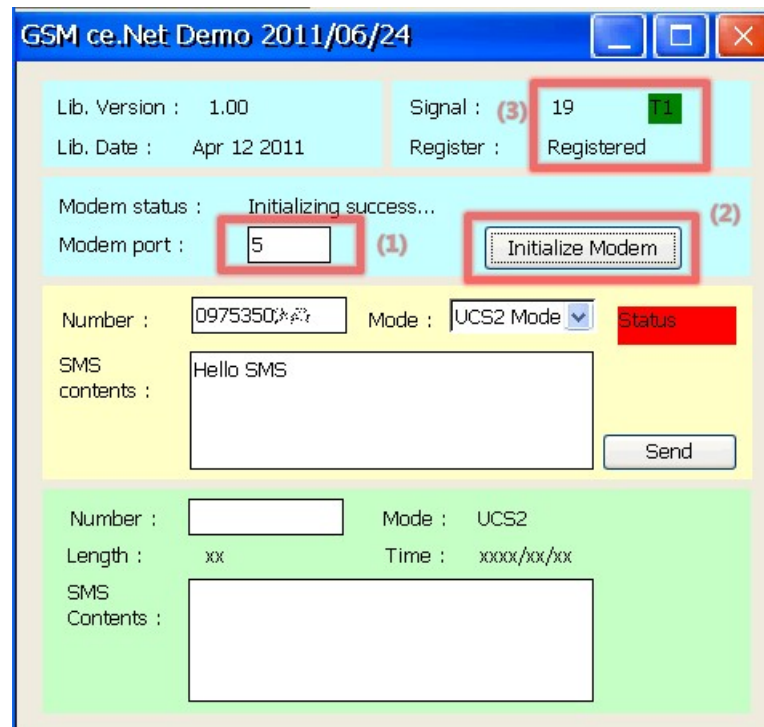


(4) First, please execute "gsmnetdemo.exe".

Please input the COM port number of the modem, and then click button "Initialize Modem".

You will look the screenshot as below after waiting a moment:

- please input "5" for "MSA1" (modem COM port)



(3) Please type the data:

Number : the phone number that you want to send

Mode : "UCS2" mean Uni-code, "7-bits" just accept English and Number

SMS contents : the string that you want to send

And click "Send", the program will start to send SMS.

(4) if you send success, the screenshot will like below.

(in this case, the phone number for Sending = the phone number for Receiving)

If fail, please check that your SIM Card is ready for Sending SMS.

