

RMV-531 FAQ

Tables of Content

Q01 : What should I do if VxServer can't add RMV-531 device after RMV-531 has connected to VxServer?3

Q02 : When the RMV-531 reconnect GPRS or 3G network, the virtual com port that already open by application can't work. I need to reopen this virtual com port to make it normal. What should I do to fix this problem?3

Q01 : What should I do if VxServer can't add RMV-531 device after RMV-531 has connected to VxServer?

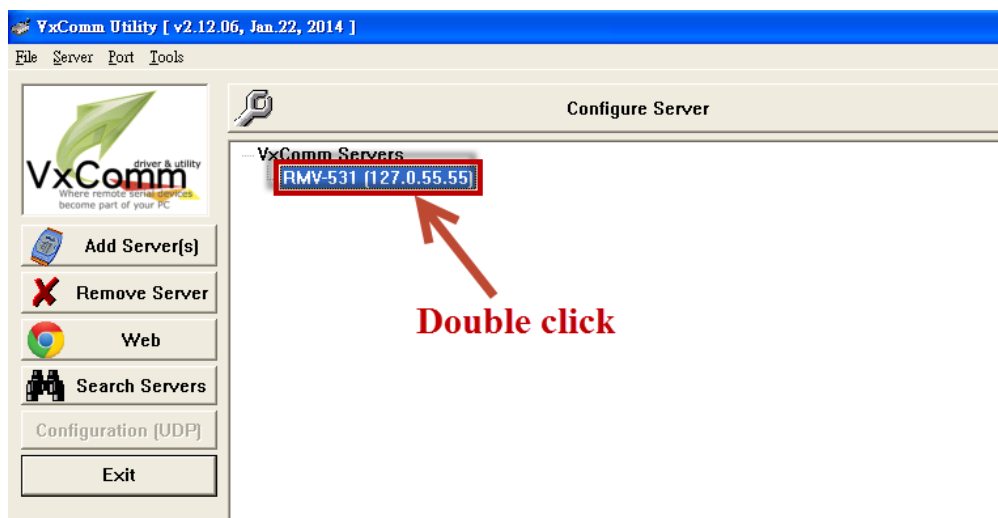
A01 :

- (1). Please make sure the version of firmware, and update firmware if it's version 1.0.0.
Download website please refer to
<ftp://ftp.icpdas.com.tw/pub/cd/usbcd/napdos/rmv-531/software/>
- (2). Please make sure the VxComm version, and it only support version 2.12.02 or later.

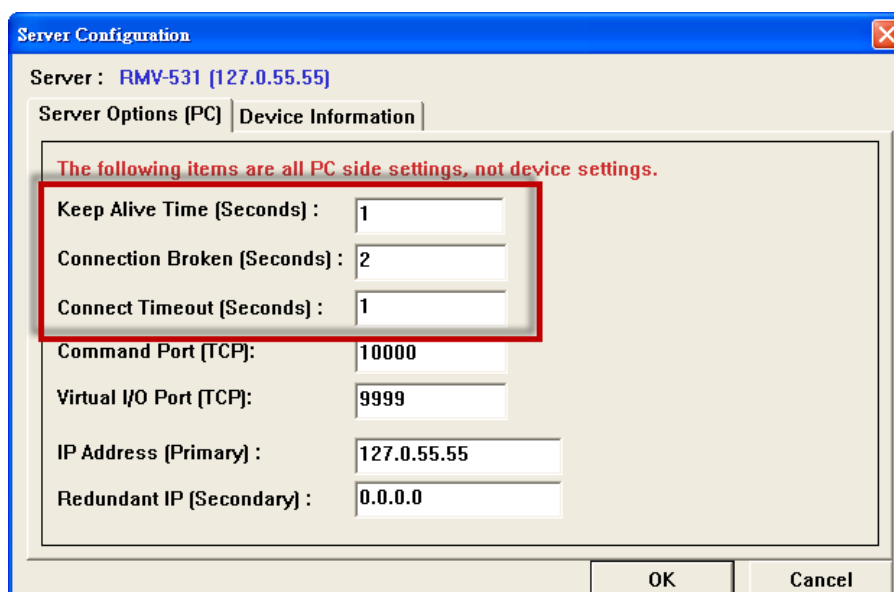
Q02 : When the RMV-531 reconnect GPRS or 3G network, the virtual com port that already open by application can't work. I need to reopen this virtual com port to make it normal. What should I do to fix this problem?

A02 : Please refer the following steps to check the settings of RMV device.

Step 1 : Open the VxComm Utility and double click your RMV device.



Step 2 : Check the settings of server configuration are like below screenshot.



Step 3 : Make sure your application have timeout that is must above 2 seconds. VxComm need 2 seconds to make connection with VxServer.